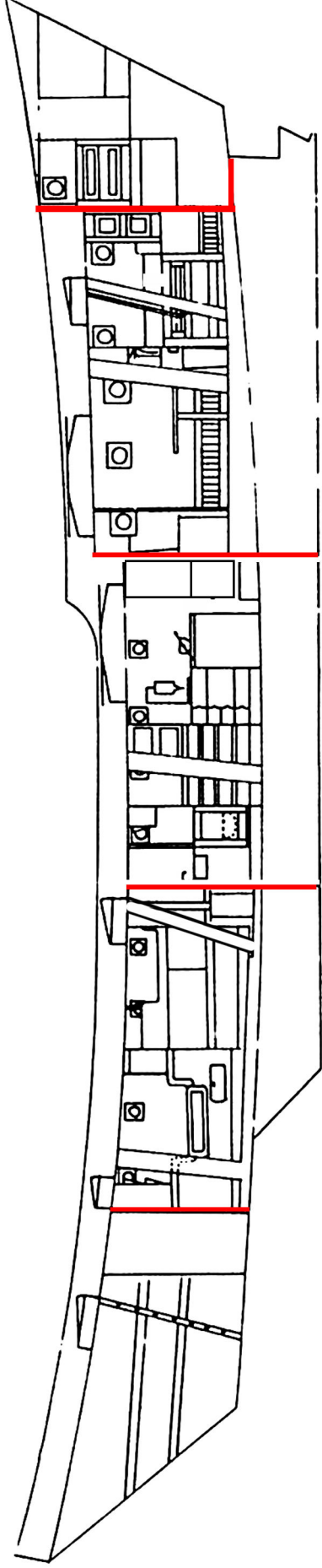
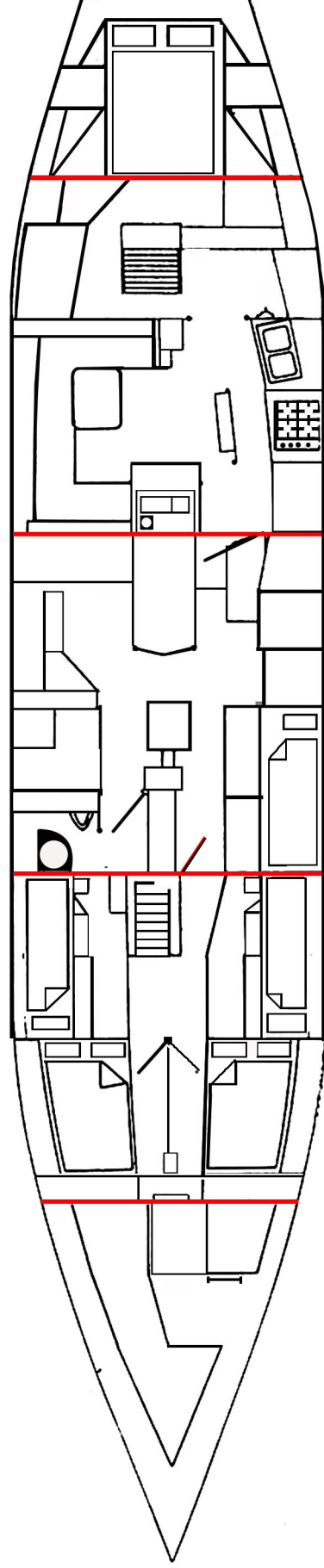


Acomodation plan Schooner Trinovante



- | | | | | | |
|---|---|--|----------------------|--|----------------------------|
| Forepeak
Chainlocker, sail stowage
fenders, mooring warps etc | Crew area
Two double cabins,
and communal area
with four single bunks. | Hold Area
Single bunk cabin,
heads(toilet), engine
workshop and stowage | Saloon
and galley | Chart table
companion way
and wet locker | Skipper and
mates cabin |
|---|---|--|----------------------|--|----------------------------|



Trinovante is divided up into five compartments with watertight bulkheads. These are shown in red.